

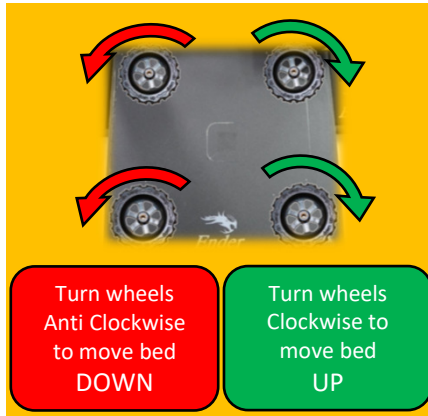
Tips for using your Creality Ender 3

Technical Specifications:

Creality Ender 3 is an FDM Printer, meaning it uses thermoplastic filament to create a 3D object layer by layer.

Here's a quick look at the specifications of your Ender 3:

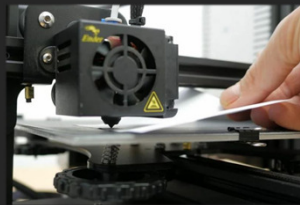
- It has a maximum build volume of 220 x 220 x 250mm (D x W x H).
- Print speed of up to 180mm/s
- Uses filaments made from PLA, PETG, TPU and ABS
- Printers' size is 440 x 440 x 465mm (D x W x H) and Weight is 8KG.
- Layer thickness: 0.1-0.4mm.
- Nozzle diameter: 0.4mm
- Printing accuracy: ±0.1mm
- Maximum nozzle temperature: 255°C
- Maximum build plate temperature: 110°C
- 1.75mm filament
- Heated build plate
- Power Recovery mode



Leveling the build plate

Make sure the printer is set to printing temperature before you start. When leveling your build plate, you can use a post-it note to set the bed height and level.

- Bed too high- Paper won't move at all
- Bed too low- Paper will move with ease
- Bed just right- Paper will grip lightly and still move.



Once you print double check the build plate level by looking at your print, using the picture below as a guide:



Too Far



Perfect



Too Close

Filament List:

With your Ender 3 you can print with the following types of filament:

- PLA
- PETG
- TPU
- ABS

We suggest you start your printing journey with PLA, as it's the easiest to print with.



Each filament comes with its own rules and instructions, so here's some of them:

PLA:

- Extruder Temperature: 180-230°C
- Bed Temperature: 40-60°C
- Print speed: 60mm/s
- Retraction Distance: 5mm
- Cooling: Yes

PETG:

- Extruder Temperature: 230-250°C
- Bed Temperature: 70-90°C
- Print speed: 60mm/s
- Retraction Distance: 5-7mm
- Cooling: Yes

TPU:

- Extruder Temperature: 220-240°C
- Bed Temperature: 40-60°C
- Print speed: 30mm/s
- Print speed: 60mm/s
- Retraction Distance: As small as possible.
- Cooling? Yes

ABS:

- Needs an enclosure to prevent breathing in harmful fumes.
- Extruder Temperature: 220-240°C
- Bed Temperature 80-100°C
- Print speed: 60mm/s
- Retraction Distance: 5mm
- Cooling? No

Tel: 01942 901 360 Email: info@3d360printer.co.uk
www.3d360printer.co.uk

Alder House
Clyde St
Leigh
WN7 2AU

Helpful Links

Creality Official Site

You can get lots of support for your printer here, you can also buy parts for your printer:

www.crealityofficial.co.uk

Buy Filament

The 3D 360 Website:

www.3d360printer.co.uk

Cura

Cura allows you to slice 3D models to print, it's free to use and doesn't need much set up. To download Cura go to:

www.ultimaker.com/software/ultimaker-cura

Sites to get 3D Models from

- GrabCAD - www.grabcad.com
- Thingiverse - www.thingiverse.com
- Yeggi - www.yeggi.com
- Thangs - www.thangs.com

Forum Lists

- Creality - forum.creality.com
- 3D Printing Forum - www.3dprintingforum.org
- Overclockers - forums.overclockers.co.uk
- YouTube - www.youtube.com (Try: [CHEP](#), [The Edge of Tech](#), [Teaching Tech](#))
- Our Facebook Group Support - <https://www.facebook.com/groups/280469864008513/people>

